

RESTRICTED

wreckage was confined to a
very small area



BASE 11-28-44 G-171

B-29 CRASH SHAAF



RESTRICTED

BASE 11-28-44 G-168 B-29 CRASH SHAAF



BASE 11-29-44 G-196 B-29 CRASH SHAAF

RESTRICTED

RESTRICTED

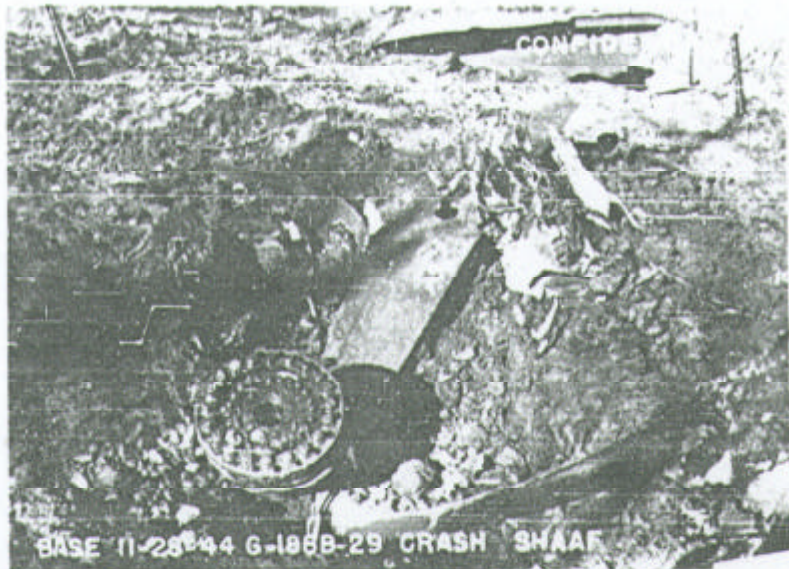
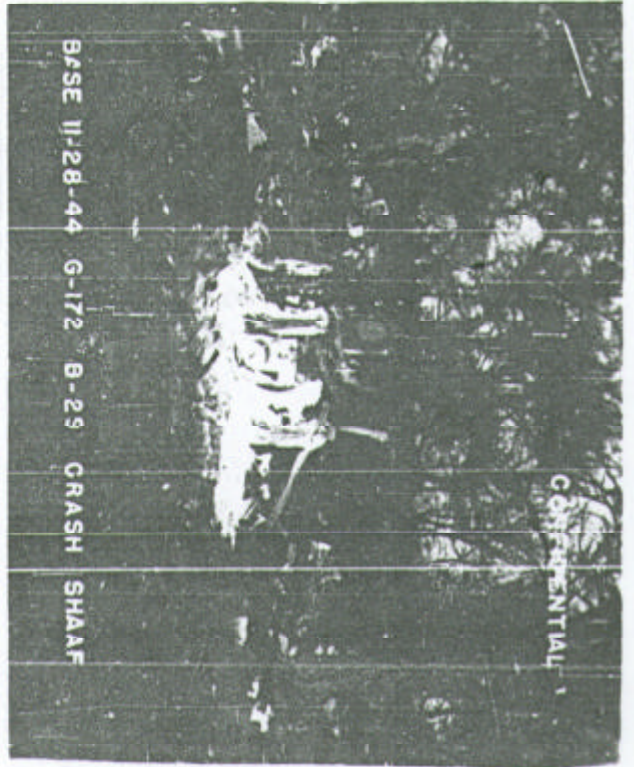
Tail snapped off and fell, indicating no forward momentum



RESTRICTED

RESTRICTED

Army 578 struck the ground
perpendicularly



RESTRICTED